

Kemlan Super Nova Freestanding



a contemporary,
slow combustion
wood heater

specialists in wood heating

 **KENLAN**
ESTABLISHED 1969



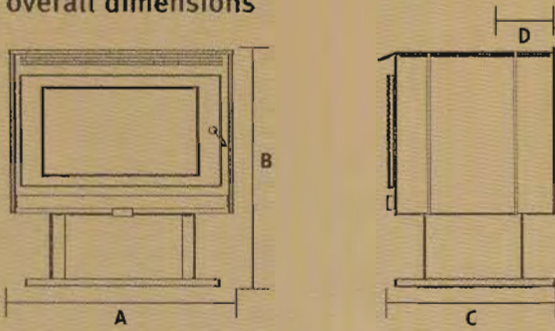
A stylish heater that offers a superb balance of form and function that will enhance the decor of any home.

Kemlan Super Nova Freestanding shown in charcoal with brass trim



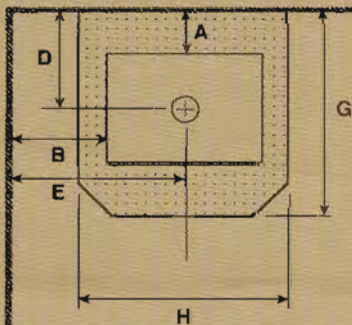
technical specifications

overall dimensions

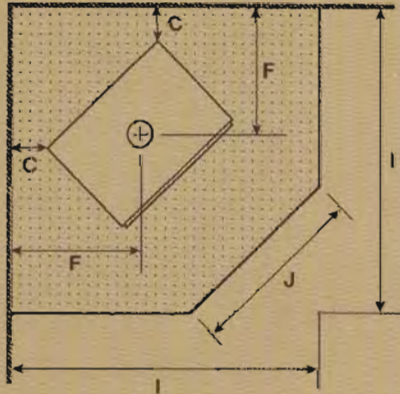


A - Width 660mm C - Depth 550mm
 B - Height 745mm D - Depth (centre of flue to back) 215mm

minimum clearances to heat sensitive materials and minimum floor protector requirements



standard installation



corner installation

A - 100mm
 B - 250mm
 C - 50mm
 D - 315mm
 E - 580mm
 F - 490mm
 G - 1100mm
 H - 1000mm
 I - 1200mm
 J - 500mm

One 900mm length of heatshield must be fitted to the flue to achieve clearances to heat sensitive materials (measurements A B C D E F).

A floor protector is required where the floor is heat sensitive. Thickness to be a minimum of 14mm heat resistant material and must extend 450mm in front and 200mm to each side of the firebox opening (measurements G H I).

Glass viewing area - 450mm wide x 250mm high
Flue pipe - 150mm Ø - top exit
Shipping weight - 136kg

All dimensions shown are approximate. Check all dimensions accurately before installation. Before installing refer to the installation instructions.

In line with our policy of continuous improvement, we reserve the right to alter specifications without notice.

construction - 6mm heavy duty steel firebox - fully welded
 25mm thick firebrick lined floor
 - 6mm heavy duty steel baffle plate

performance - Heating capacity - 170-240m² (18-25 squares)
 - Peak heat output - 16.4kW
 - Average emission output - 3.6g/kg

	BURN RATE		
	HIGH	MEDIUM	LOW
Average heat output (kW)	13.4	7.6	4.7
Fuel consumption (kg/hr)	4.2	2.3	1.3

AMDEL test report no. 1AM0656
 Fuel type - Hardwood

tested by  www.amdel.com

Heating capacity of this appliance is given as a guide only and may vary depending on the climate zone and type of dwelling (floor plan and degree of insulation). Consult your local authorised distributor to determine realistic expectations for your home.

Heat output and fuel consumption of this appliance is dependant on the moisture content, size, loading geometry and the type of hardwood used.

The appliance complies to the safety standards AS/NZS 2918. When in use some parts may become hot. A suitable fireguard is recommended where the very young, elderly or infirm are concerned.

10 year firebox warranty

The firebox is covered by a 10 year warranty.
 Other parts are covered by a one year limited warranty

 **KEMLAN**
 ESTABLISHED 1969

ABN 92 057 370 718

A Division of INNISBROOK No.3 Pty Ltd A.C.N. 010 144 135

A Division of NUBROOK No.3 Pty Ltd A.C.N. 010 762 688

Specialists in fireplace design & manufacture

Head Office: 59 Pineapple Street (PO Box 259) Zillmere Qld 4034

Telephone: (07) 3263 8488 **Facsimile:** (07) 3263 6452

www.kemlan.com

Printed in Australia edition 01/2001

your local authorised distributor